

# Suite van Europese Kerstliederen

arr.: Oswald Fieuws

## 1. Prelude - Kleine Pastorale

Legato (♩ = 40)

2 15

18 18 8 13

## 2. Nu is die roe van Jesse

## 3. In een huis

57 4 22 2

85

88

91

94

## 4. Vrolijk herders

a capella

Refrain

98 6

207 **B** 8 **C** 4 **D1** 7

226 **A2**

231 **D2**

235

240

244

249

254

259 **9. Dreikönig zu ehren** 2 2 2

267

271 **10. No se si sera el amor**  $\text{♩} = 52$

83 **3. In een huis**



89



94



98 **4. Vrolijk herders**  
a capella



Refrain

108



**5. Still, still, still**

126



132



138



**6. Hoe leit dit kindeke**

143



⊕ (A) (C)



# Suite van Europese Kerstliederen

arr.: Oswald Fieuws

## 1. Prelude - Kleine Pastorale

Legato ♩ = 40

2 A 15 B 18

36 A2 4

44 B2

50 rit. a tempo

57 2. Nu is die roe van Jesse

4 22

83 3. In een huis 15 4. Vrolijk herders a capella 6

15 4. Vrolijk herders a capella 6

105 Refrain

# Suite van Europese Kerstliederen

arr.: Oswald Fieuws

## 1. Prelude - Kleine Pastorale

Legato ♩ = 40  
2

Musical notation for the first system of '1. Prelude - Kleine Pastorale'. It features a treble clef, a 6/8 time signature, and a key signature of one sharp (F#). The notation includes a whole note chord, followed by a half note chord, and then a series of eighth and sixteenth notes. There are two circled letters 'A' and 'B' above the staff, with the number '15' between them. The staff ends with a double bar line.

Musical notation for the second system of '1. Prelude - Kleine Pastorale'. It starts with the number '21' above the staff. The notation continues with eighth and sixteenth notes, including a triplet of eighth notes. The staff ends with a double bar line.

Musical notation for the third system of '1. Prelude - Kleine Pastorale'. It starts with the number '26' above the staff. The notation continues with eighth and sixteenth notes, including a triplet of eighth notes. The staff ends with a double bar line.

Musical notation for the fourth system of '1. Prelude - Kleine Pastorale'. It starts with the number '32' above the staff. The notation includes a whole note chord, followed by a half note chord, and then a series of eighth and sixteenth notes. There are two circled letters 'A2' and 'B2' above the staff, with the number '8' between them. The staff ends with a double bar line.

Musical notation for the fifth system of '1. Prelude - Kleine Pastorale'. It starts with the number '46' above the staff. The notation continues with eighth and sixteenth notes, including a triplet of eighth notes. The staff ends with a double bar line. The words 'rit.' and 'a tempo' are written above the staff.

Musical notation for the first system of '2. Nu is die roe van Jesse'. It starts with the number '52' above the staff. The notation includes a whole note chord, followed by a half note chord, and then a series of eighth and sixteenth notes. There are three circled numbers '3', '4', and '22' above the staff. The staff ends with a double bar line.

Musical notation for the first system of '3. In een huis'. It starts with the number '83' above the staff. The notation includes a whole note chord, followed by a half note chord, and then a series of eighth and sixteenth notes. There are two circled numbers '2' and '3' above the staff. The staff ends with a double bar line.

# Suite van Europese Kerstliederen

arr.: Oswald Fieuids

## 1. Prelude - Kleine Pastorale

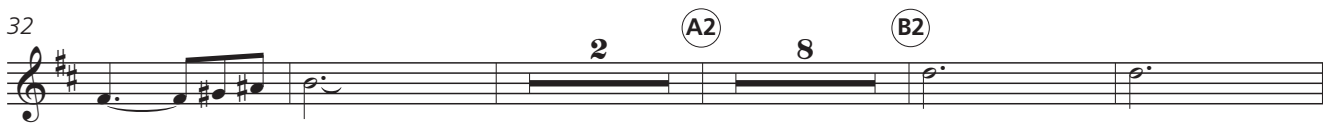
Legato ♩ = 40



27



32



46



51

*a tempo*



57

## 2. Nu is die roe van Jesse



83

## 3. In een huis

15

## 4. Vrolijk herders

a capella

6



105

## Refrain



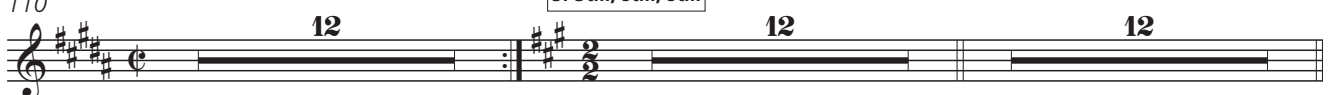
110

## 5. Still, still, still

12

12

12



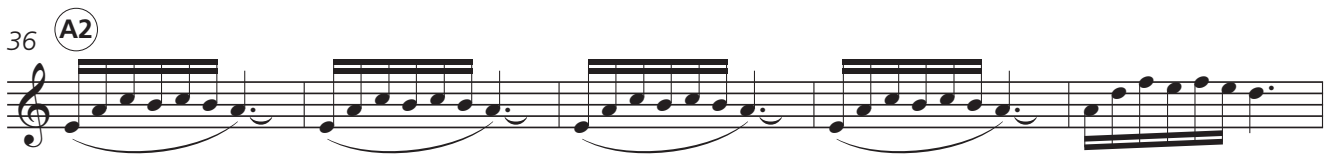
# Suite van Europese Kerstliederen

arr.: Oswald Fieuws

## 1. Prelude - Kleine Pastorale

Legato ♩ = 40

(A)





327 *rit.* Refrain

333

339 13. Away in a manger 8

352 16

372 14. Quando nascette nino

378

383

388 Fine

394

400

406 D.C.

# Suite van Europese Kerstliederen

arr.: Oswald Fieuids

1. Prelude - Kleine Pastorale

Legato ♩ = 40

2 (A) 15 (B) 18

36 (A2)

2. Nu is die roe van Jesse

8 (B2) 13 4

61

66

71

77

3. In een huis

2

85

90

94

98

4. Vrolijk herders

a capella

6 Refrain

# Suite van Europese Kerstliederen

arr.: Oswald Fieuws

1. Prelude - Kleine Pastorale

Legato ♩ = 40

2. Nu is die roe van Jesse

3. In een huis

4. Vrolijk herders

a capella

Refrain

5. Still, still, still

6. Hoe leit dit kindeke

Refrain

1, 3.

Fine

2.

7. Jungfru Maria

1.

2, 3.

8. Tanz in dem IV-Ton