

Ludo Claesen

CANTATA FOR LENT

Commissioned by The Cathedral Choir of Hasselt (Belgium) 2016

Cantata for mixed choir, strings, organ, flute and oboe

1. Ash Wednesday
2. Laetare Jerusalem
3. Palm Sunday

SCORE

D/2017/6045/010

Cantata for Lent

1. Ash Wednesday

Ludo Claesen

Flute

Oboe

Sopr./alt

Ten./Bas

Organ

Violin 1

Violin 2

Viola

Cello

Double Bass

1

1

1

1

1

1

1

1

1

1

mp

mp

mp

Ludo Claesen - Cantata for Lent - Score

13

13

13

mf Dis-si-mu-lans pec-ca-ta ho-mi-num prop-ter pae-ni-

13

Ho - mi - num prop - ter pae - ni -

13

13

13

13

13

13

17 *a tempo*

17 *(muta in Cor Anglais)*

ten - ti - am et par - cens il - lis et par - cens il - lis par - cens il - lis.

ten - ti - am et par - cens il - lis et par - cens il - lis et par - cens il - lis

p

17 *poco rit.*

sfz

21 *mp*

21 *mp*

21 *mf* Qui - a Tu es Do-mi - nus, Do-mi-nus

21 Qui - a Tu es Do-mi - nus, *cresc.*

21 *p*

21 *a tempo* *mp*

21 *mp*

21 *mp*

21 *mp*

21

8

Ludo Claesen - Cantata for Lent - Score

73

73

73

73 T/B

mf Me-men-to ho - mo Qui-a pul-vis es et in pul-ve-rem re-ver-te - ris

73 *p*

73 *fp*

73 *fp*

73 *fp*

73 *fp*

73 *fp*

73

8

Ludo Claesen - Cantata for Lent - Score

74

74

74

74

Me - men - to ho - mo Qui - a pul - vis es et in pul - ve - rem re - ver - te - ris

74

74 *fp*

74 *fp*

74 *fp*

74 *fp*

74 *fp*

8

Ludo Claesen - Cantata for Lent - Score

75

75

75

mp Me-men-to ho - mo Qui - a pul - vis es et in pul - ve - rem re - ver - te - ris
Rall. poco a poco

75 *mp*

75 *p* (*non vibr. al niente*)

75 (*non vibr.*)

75 (*non vibr.*)

75 (*non vibr.*)

75 (*non vibr.*)

75

8

76

mp
C. A.

p *(simile)*

LAMENTO Female Choir

mp
im - mu - te - mur

76

76

76 *mp* *(non vibr.)*

76 *mp* *(non vibr.)*

76 *mp* *(non vibr.)*

76 *mp* *pizz.* *(non vibr.)*

mp

Ludo Claesen - Cantata for Lent - Score

9

Lae - ta - re Je - ru - sa - lem Lae - ta - re Je - ru - sa - lem

te om - nes Lae - ta - re Je - ru - sa - lem Lae - ta - re Je -

arco
mf

arco
mf

arco
mf

13

13

Lae-ta Lae-ta-re Je - ru - sa - lem Lae-ta Lae - ta-re Je - ru - sa - lem *f* Qui di - li - gi - tis

13

ru - sa - lem Lae-ta Lae - ta-re Je - ru - sa - lem Je - ru Je - ru - sa - lem Qui di - li - gi - tis

13

13

13 *arco* *(spicc.)*

13 *arco* *(spicc.)*

13

13 *mf*

13 *mf*

53

53

cresc.

cresc.

(Agitato)

naar het huis des He-ren zul-len wij gaan!

mf Gau - de - te cum lae-

53

53

mf

53

mf

53

pizz.

53

pizz.

63

(ben legato)

p Wij zul - len gaan naar het huis van de

mp In

63

63

p (*non vibr.*)

63

p (*non vibr.*)

63

p (*non vibr.*)

63

63

63

8

69

69

Heer.

mf Wij zul - len

mf Wij zul - len gaan haar het

do - mum Do - mi - ni i - bi - mus (*simile*) In do - mum Do - mi -

69

69

69

69

69 *p*

8

73

73

73

gaan naar het huis van de Heer. **(Adagio)**

73

huis van de Heer *pp* In

73

ni i - bi - mus

un poco stentato

73

73

73

73

73

73

73

73

73

8

81 *mp*

81 *mp*

CHORAL

mf I re - joi - ced with those who said to me, let us go to the house of the

81 *mf*

col ped.

81

81

81

81

81

81

85 1° time:
2° time:

85 1° time:
2° time:

85 1° time: (a Tempo)
2° time:

Lord. Pray for the peace pray for the peace of Je - ru - sa - lem, may those who

85 1° time:
2° time:

poco rit.

85 1° time:
2° time:

85 1° time:
2° time: v

85 1° time:
2° time: v

85 1° time:
2° time: v

85 1° time:
2° time:

85 1° time:
2° time: v

85 1° time:
2° time: v

3. Palmsunday

The musical score for '3. Palmsunday' is written in common time (C) and consists of several systems of staves. The first system features two vocal parts: a soprano line and an alto line. The tempo is marked 'MODERATO'. The soprano part begins with a half note G4, followed by quarter notes A4, B4, and C5, with various accidentals and phrasing slurs. The alto part starts with a half note G3, followed by quarter notes A3, B3, and C4, also with phrasing slurs. Dynamics include 'f' (forte) and 'mf' (mezzo-forte). The second system shows two empty staves, likely for a second vocal part and a piano accompaniment. The third system contains a piano accompaniment with a right-hand part (treble clef) and a left-hand part (bass clef). The right hand plays chords, and the left hand plays a single bass note. Dynamics include 'mf'. The fourth system consists of three empty staves. The fifth system features a bass line in a bass clef, starting with a half note G2, followed by quarter notes A2, B2, and C3, with phrasing slurs and a dynamic marking of 'f'. The final system shows two empty staves.

Ludo Claesen - Cantata for Lent - Score

5

5

f Ho-

f Ho-san-na

5

f Ho - san - na Fi-li-o Da-vid

mf

5

f

5

f

5

f

5

f

5

f

17

dim. 3 *p*

17

dim. 3 *p*

17

mp

17 ve - nit in no - mi - ne Do - mi - ni

mp

Be - ne - dic - tus qui

17

p

17

p

17

p

17

p

17

p

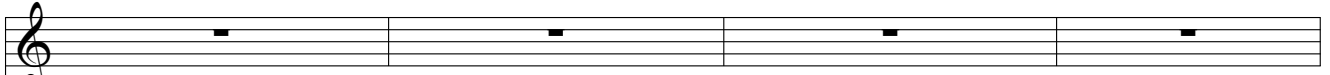
17

p

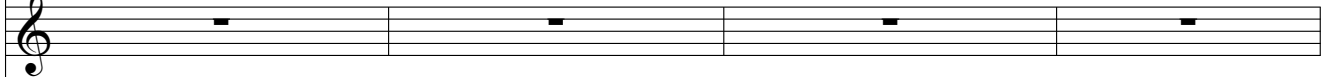
8

p

97



97



o - be - di - ens us - que ad mor - tem mor - tem au - tem cru - cis

(*espress.*)

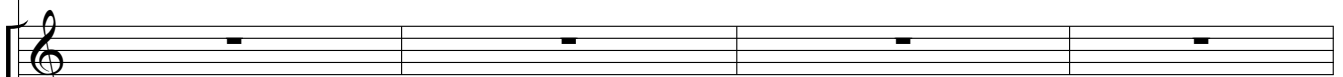
97



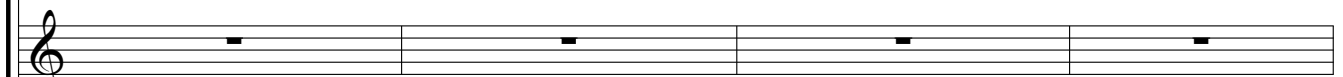
97



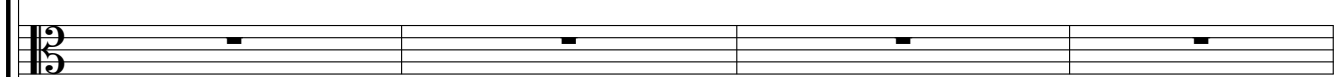
97



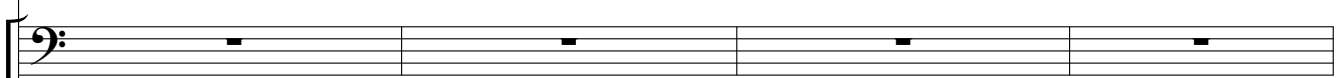
97



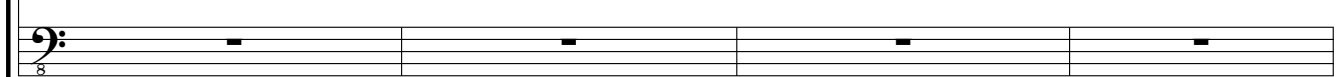
97



97



97



101

101

mor-tem au - tem

(Poco più Mosso)

101 mor - tem cru - cis *pp* Prop-ter quod et De - us *mp*

101

101

101

101

101

101

130

130

CHORAL

Festivole

Shout with joy to God all the earth! Sing the glo - ry

130 *f*

130 *f*

130 *mf*

130 *mf*

130 *mf*

130 *mf*

130 *mf*

130 *mf*

8

133

133

of his name, make his praise glo - ri - ous! make his praise

133

133

133

133

133

133

133

133

133

152

152

el Shout with joy to God all the earth

152

152

152 (*leggièro*)

152 (*simile*)

152 (*simile*)

152 (*simile*)

152 *pizz.*

152 *pizz.*

163 *8va*

163

f Ho - san - na

163

163

163

163

163

163

163

163

163

