

Neue Wiener Ländler

Joseph Franz Karl LANNER

(1801-1843)

Transcr.: Jan M.C. GEUNS

♩ = 120

No 1

pp A E7 > A > E7 A E7 A

> E7 A *ff* D A A/E E7 A E7 A *f* *f* *f*

No 2

p E7 > A > E7 A *p* A E7 > >

System 1: Four staves of music in A major. The first staff features a melodic line with slurs and accents. The second staff has a similar melodic line with slurs. The third and fourth staves provide harmonic support with chords and bass notes. Chord symbols A and E7 are present. Dynamics include *f* (forte) and accents.

No 3

System 2: Four staves of music in A major. The first staff begins with *dim.* (diminuendo) and *p* (piano). The second staff has *pp* (pianissimo) and *ppp* (pianississimo) markings. The third and fourth staves have *pp* and *ppp* markings. Chord symbols A and E7 are present. Dynamics include *f* (forte) and accents.

System 3: Four staves of music in A major. The first staff features a melodic line with slurs and accents. The second staff has a similar melodic line with slurs. The third and fourth staves provide harmonic support with chords and bass notes. Chord symbols A, D, and E7 are present. Dynamics include *p* (piano) and accents.

System 4: Four staves of music in A major. The first staff features a melodic line with slurs and accents. The second staff has a similar melodic line with slurs. The third and fourth staves provide harmonic support with chords and bass notes. Chord symbols A and E7 are present. Dynamics include *f* (forte) and accents.

Neue Wiener Ländler

Joseph Franz Karl LANNER

(1801-1843)

Transcr.: Jan M.C. GEUNS

♩ = 120

No 1

No 2

No 3

No 4

No 5

Neue Wiener Ländler

Joseph Franz Karl LANNER

(1801-1843)

Transcr.: Jan M.C. GEUNS

♩ = 120

No 1

No 2

No 3

No 4

No 5

Neue Wiener Ländler

Joseph Franz Karl LANNER
(1801-1843)

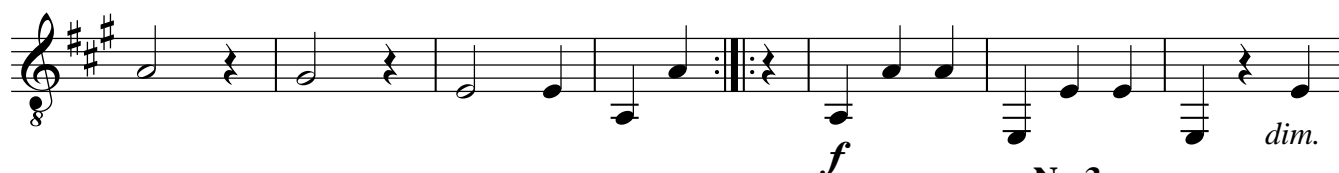
Transcr.: Jan M.C. GEUNS

♩ = 120

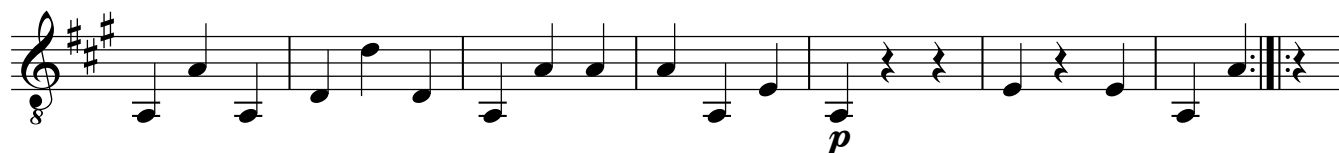
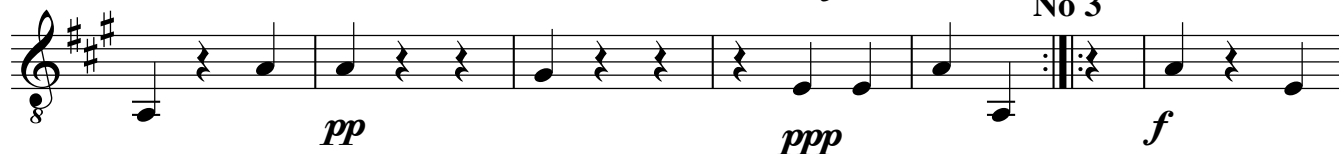
No 1



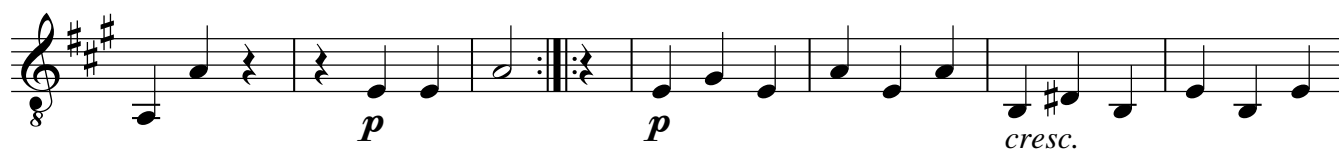
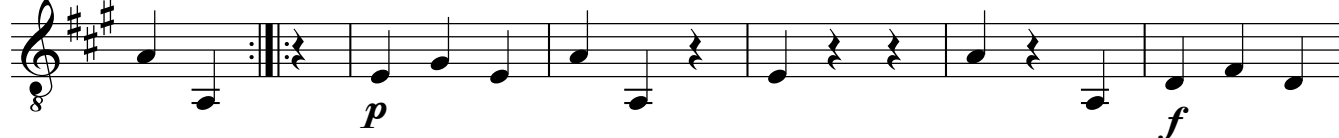
No 2



No 3



No 4



No 5

