

Leading the In-laws Home

Firn die Mekhatonim aheim (Hora)

Naftule Brandwein (1884-1963)

Arr.: Jan M.C. Geuns

A ♩ = 104

Cl. 1

Cl. 2

Cl. 3

B. Cl.

6

11

15

1. 2.

This system contains measures 15 through 18. It is divided into two endings. The first ending (marked '1.') spans measures 15 and 16, leading to a repeat sign. The second ending (marked '2.') spans measures 17 and 18. The score is written for four staves: two treble clefs and two bass clefs. The music features a mix of eighth and quarter notes, with some notes beamed together. A double bar line separates the two endings.

B

This system contains measures 19 through 22. It is marked with a 'B' in a box at the beginning. The music continues on the four-staff system. It features a variety of rhythmic patterns, including eighth notes, quarter notes, and dotted notes. There are several slurs and ties used throughout the passage.

23

This system contains measures 23 through 26. The music continues on the four-staff system. It features a variety of rhythmic patterns, including eighth notes, quarter notes, and dotted notes. There are several slurs and ties used throughout the passage.

Clarinet 1

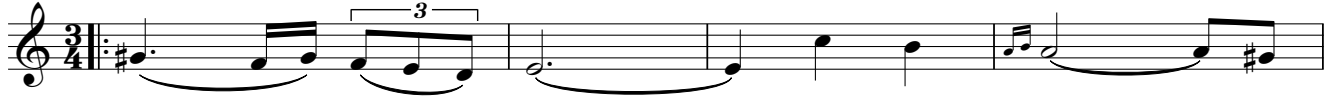
Leading the In-laws Home

Firn die Mekhatonim aheim (Hora)

Naftule Brandwein (1884-1963)

Arr.: Jan M.C. Geuns

A ♩ = 104



B

